

in 28 days into the NonStop Java World

A person in dark clothing is seen from behind, leading a team of sled dogs across a vast, flat, and desolate landscape covered in snow. The dogs are harnessed together and are pulling a sled. The landscape is flat with some low, rounded hills in the distance. The sky is clear and blue, with a bright light source creating a lens flare effect. The overall scene is one of a long, arduous journey in a cold, open environment.

a journey

with Hans-Fried Kirschbaum
CommitWork GmbH

Fiction became Reality

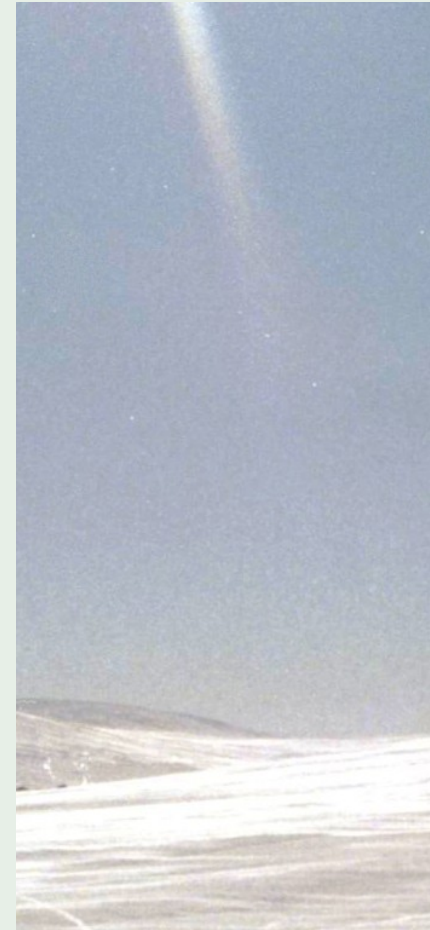
on this journey I show you, how you bring your Java-application in only 28 days into the production.

No standalone Test-Applikation, but a complete Business-application

- SingleSign-on
- Menueadministration
- Client-Controlling
- Authorisationsystem
- Software-Distribution

Agenda

- Why to travell ?
- Where will we go ?
- The preparations
- Let's go
- Learning by doing
- Your guide



Why to travell ?

- On your HP NonStop Server runs high available applications, which you never will entrust to another Hardware
- C, Cobol, SQL/MP and Pathway are a solid base



Why to travel ? That's why !

- young developers have an object-oriented education
- Data exchange with other systems as SAP Netweaver over J2EE or Webservices
- the HP NonStop Server gets more powerful
- on the HP NonStop Server is much more possible
- Java Clients enable a new dialog design

Where will we go?

- The new world becomes reality some years ago
 - already on the D-Release Java runs
- J2EE BEA WLS is released for G- and H-Releases
- Open Source J2EE JBoss runs well
- Hibernate supported SQL/MX
- SQL/MX will support referentielle Integrität, Clobs and Blobs

no Big Bang, but a smooth migration

- I show you the comfortable way

in 28 days into the NonStop Java World



The preparations - day 1 - 2

- CommitWork presents you there Workshops for ex.
 - comparison between Rich- and Thin-Client-Architectur
 - Java on HP NonStop
 - BEA, JBoss and Tomcat on HP NonStop
 - Architectures: Web Service, Struts, OmnivoBase
 - Client Softwaredistribution
 - OSS, filesystem
- You decide one of them,
or do you wish an individuell Workshop ?
- CommitWork put the Workshops for you together

The preparations - day 3 - 5

- CommitWork carry out the Workshops at your location
- now you know, where the journey will go
with the OmnivoBase you are prepared for further use
- a change of the Applikationsserver or of the Database is possible everytime

Let's go - day 6 - 10

CommitWork installed:

- OSS
- JVM
- CVS
- J2EE

CommitWork konfigured:

- BEA WLS or JBoss



Let's go - day 11 - 12

- Customizing

the GUI Layout will be adapted to your wishes

these included your Logo, heading- and footing- area,
Login-Dialog and the structure of the Menu



Let's go - day 13 - 14

- Installation of OmnivoBase

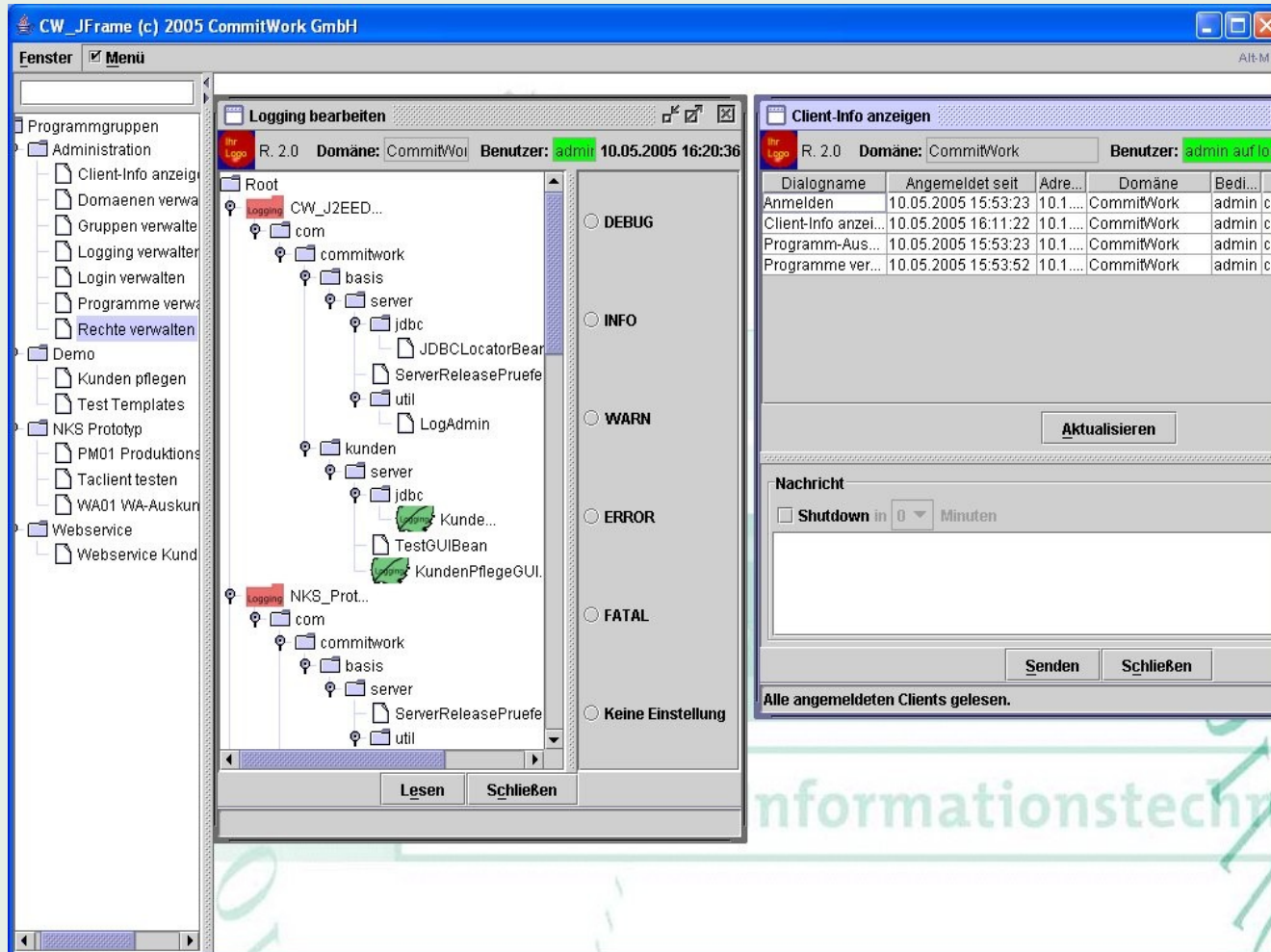
the Framework will be installed

these job will be done by CommitWork together with two of your employees

in these way the structure and the correlation will be imparted

Let's go - day 13 - 14

- the Desktop



Let's go - day 13 - 14

- the Menue



- A uniform Dialog-Layout

heading



footing

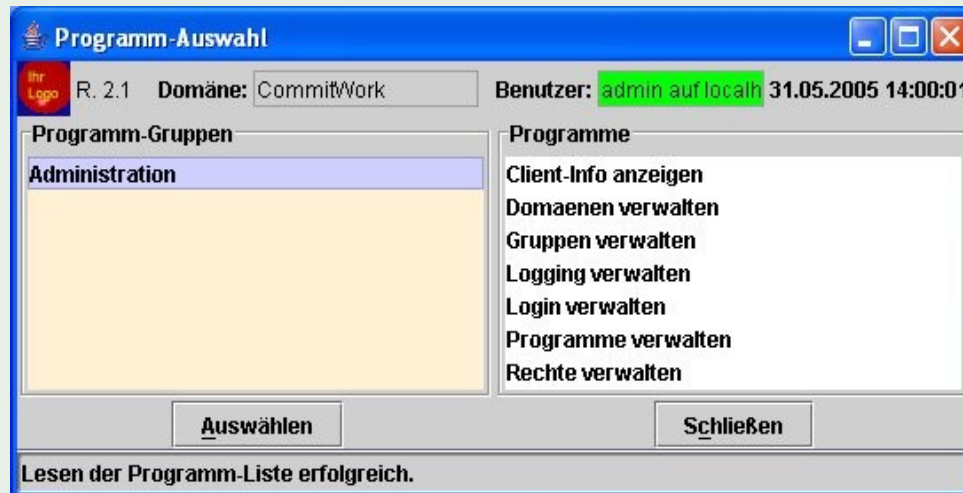


Let's go - day 13 - 14

- Login Dialog



- The Menue as a dialog



Let's go - day 13 - 14

- Menue as a Tree



Let's go - day 13 - 14

- Authorisationsystem



Let's go - day 13 - 14

- Client-Control

The screenshot shows a Windows-style application window titled "Client-Info anzeigen". At the top, there is a status bar with a logo, the text "R. 2.0", a "Domäne:" field containing "CommitWork", a "Benutzer:" field containing "admin auf localhost" (highlighted in green), and a timestamp "10.05.2005 17:07:02". Below this is a table with the following data:

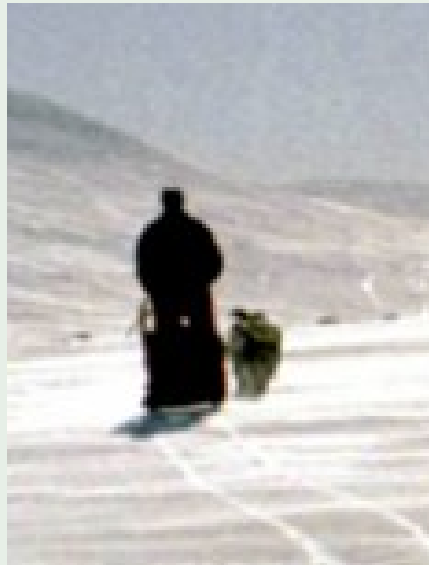
Dialogname	Angemeldet seit	Adresse	Domäne	Bediener	Modul	Versions-Nr.
Anlegen einer neu...	10.05.2005 16:36:55	10.1.1.22	CommitWork	admin	com.commitwork.basis	2.0
Gruppen verwalten	10.05.2005 16:35:43	10.1.1.22	CommitWork	admin	com.commitwork.basis	2.0
Rechte-Zuweisung	10.05.2005 16:37:39	10.1.1.22	CommitWork	admin	com.commitwork.basis	2.0

Below the table is a button labeled "Aktualisieren". Underneath is a "Nachricht" section with a checkbox for "Shutdown" and a dropdown menu set to "0" with the label "Minuten". At the bottom of the message section are buttons for "Senden" and "Schließen". A status bar at the very bottom of the window reads "Alle angemeldeten Clients gelesen."

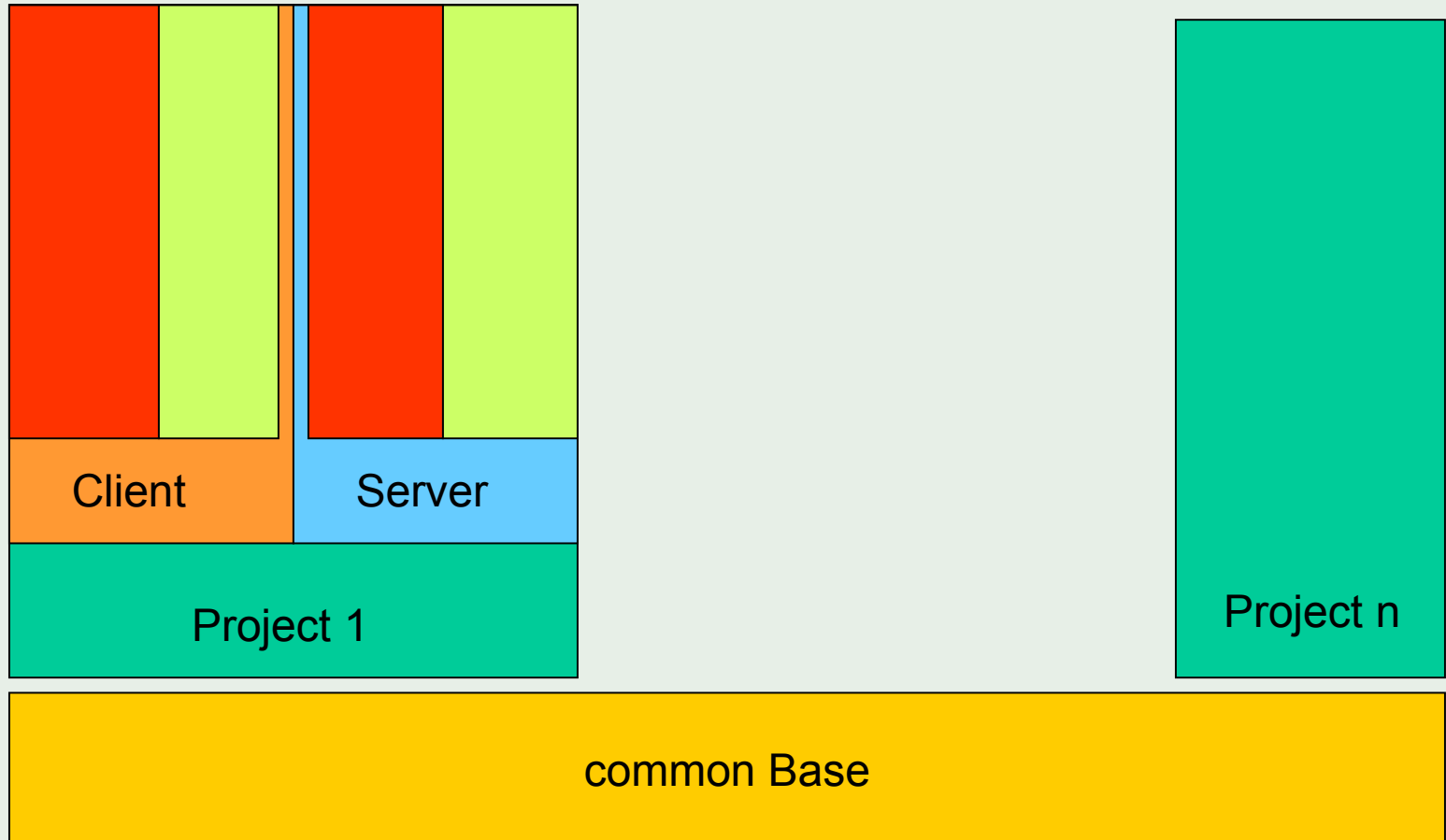
Constuction of the Prototyp


Your developers (2 Persons) create the Prototypen


CommitWork helps with advise and action



learning by doing - day 15 - 20



 - generated

 - programmed

learning by doing - day 15 - 20

- Design of the Gui's

FS01 Fehlerstrecken

R. 1.0 Domäne: CommitWork Benutzer: admin auf oss 23.03.2006 12:06:34

Anlage VA11 ME-ID c Suchen

KB-NR 6571657 ID-NR 65-716-57 WA-Nr. 1 ErzGr 1 Datum Ringende 01.04.05 00:05:00 Vor-Anlage 11 Akt.Anlage 11

Breite 0,00 Dicke 0,010 Länge 5000 Gewicht 0 Mat-Fehler 044
Soll 0,00 0,010 045
Min 0
Max 0

Kunde 0 1
Verwendung 1 Verwendung

Text mit Historie, geändert 15.3.06, 11:35:45 Text speichern Text löschen

Fehlerstrecken

von	bis	Fehler	Lg	Se	Int	Vw	SW-Name	Tol	Ist	Anzahl	Opti
10	20	013 Die wilde 13	1	U	0	<input type="checkbox"/>	X	0	1,1	1	<input type="checkbox"/>
20	2100	016 Die hilde 16	0		0	<input type="checkbox"/>		0	0	0	<input type="checkbox"/>
1200	1700	016 Die hilde 16	F		0	<input type="checkbox"/>	asfd	0	1	0	<input checked="" type="checkbox"/>
1600	1900	016 Die hilde 16	C	U	3	<input checked="" type="checkbox"/>	CutTest ...	0	333	0	<input checked="" type="checkbox"/>
40	60	045 Ein grosser Fehler	1	B	0	<input type="checkbox"/>	jd	0	12,12	1	<input type="checkbox"/>
2000	5300	016 Die hilde 16	2	O	0	<input type="checkbox"/>	lkjih	1	1	1	<input type="checkbox"/>
122	500	016 Die hilde 16	2	U	2	<input type="checkbox"/>	Nee	3	123	2	<input checked="" type="checkbox"/>
1	2	044 Ein Fehler	2	O	0	<input type="checkbox"/>	lkjih	1	1	1	<input type="checkbox"/>
1000	1500	016 Die hilde 16	E	O	0	<input type="checkbox"/>	test	0	123	0	<input checked="" type="checkbox"/>

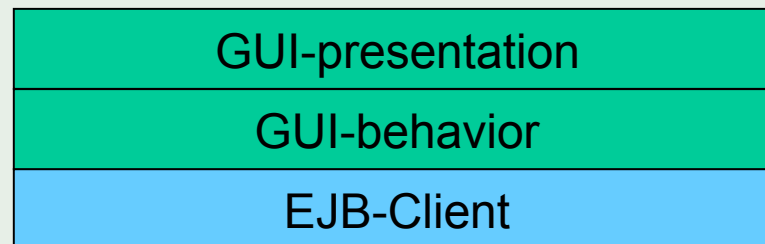
von bis Fehler Lg Se Int Vw SW-Name Tol Ist Anzahl Opti

Graphisch anzeigen ... Nacharbeit Speichern Ändern Löschen Schließen

Produktionsdaten gelesen.

learning by doing - day 15 - 20

- Design of the guis
using the GUI-Builders you prefer
- Behavior layer
heridity classes from the GUI-Builder will be adapted
by Eclipse
- EJB-Clients
will be partly generated



learning by doing - day 21

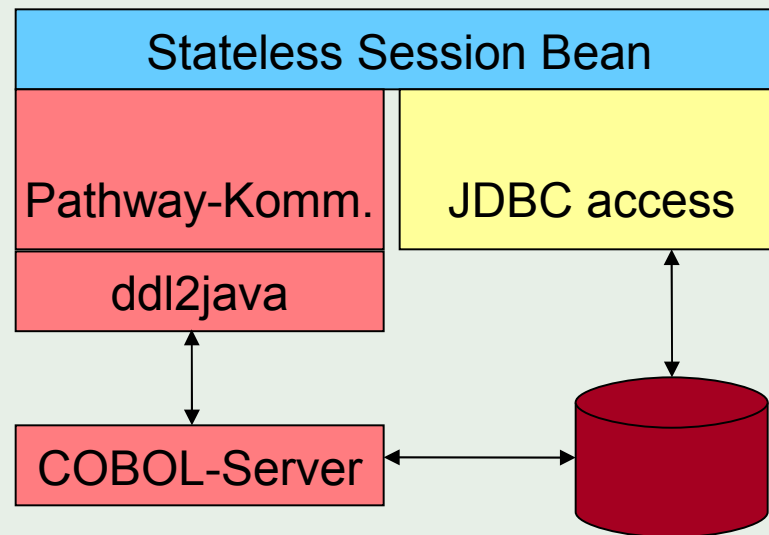
- in your existent Pathway-Servern lies the biggest part of your businessprocesses. You will be able to use theme further more.

with the DDLTOJAVA class you can integrate existing Pathway-Server into Java-Server (Entity-Beans)

learning by doing - day 22 - 25

- Creating of the Servers

adjustments for the Server will be done with Eclipse.
The compilation will be done on the PC



learning by doing - day 26 - 28

- Test

Your Application is written in “pure Java”.
When you don't use the DDLTOJAVA-class, the application runs on every JVM.
For example on your PC

- Installation

the Client-Application will be deposited on a Webserver and be distributed over [Java Web-Start](#)

the Server-Application will be deployed on the Application-Server

Your guide

- **CommitWork knows a lot about this aus**
since 10 years the Scouts of CommitWork explore the environment, so they can guide you the best ways
- Java-Applications, created by **CommitWork**, runs since 2001 successful on HP NonStop Server
- **Commitwork** is convinced from the productive power of the HP NonStop Server
- **we promised:**
In 28 day your employees developed successfully their first Java-Projekt on a HP NonStop Server

Let's do it together

